

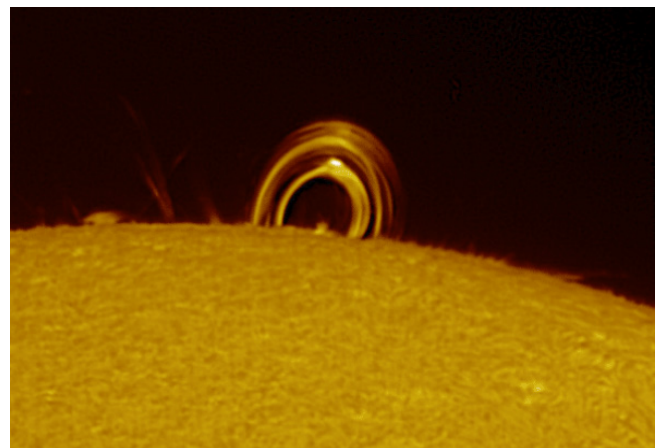


LPI-G Series Quick Start Guide



645001: LPI-G Color
645002: LPI-G Monochrome

645003: LPI-G Advanced Color
645004: LPI-G Advanced Monochrome



Included Items



Requirements

Compatible with Windows XP / Vista / 7 / 8 / 10 (32 & 64 Bit), Mac OS X, and Linux
Computer should have at least 2GB of memory, Intel Core2 2.8GHz CPU equivalent or higher, and be equipped with a USB 2.0 port. For the LPI-G Advanced camera, USB 3.0 is recommended for maximum frame rate.

Quick Start Summary

1. Install Meade's SkyCapture software, camera DirectShow drivers, and ASCOM Platform & camera drivers onto the computer using the included Meade SkyCapture CD-ROM.
2. If you will be using a special camera filter, attach the included nosepiece to the front of the camera. Then thread on the special camera filter to the front of the nosepiece.
3. Connect the Meade LPI-G to the computer using the included USB cable.
4. If using the camera as an autoguider, connect one end of the included ST-4 autoguide cable into the camera and the other end into the telescope guider port. See your telescope mount instructions on how to do this.

Software Installation

Insert the CD-ROM into the computer and wait for the below screen to appear. If it doesn't appear, go to "My Computer" and double-click on the CD-ROM drive where the Meade SkyCapture was placed. Then, double click on the autorun.exe.



Meade SkyCapture

Select the "Camera Application Software" to install Meade's SkyCapture software. The SkyCapture software allows for both basic image capture and image processing functions suitable for both planetary and deep-sky imaging.

After the SkyCapture software installation completes, double-click on the SkyCapture icon placed on the desktop to open Meade's SkyCapture software.



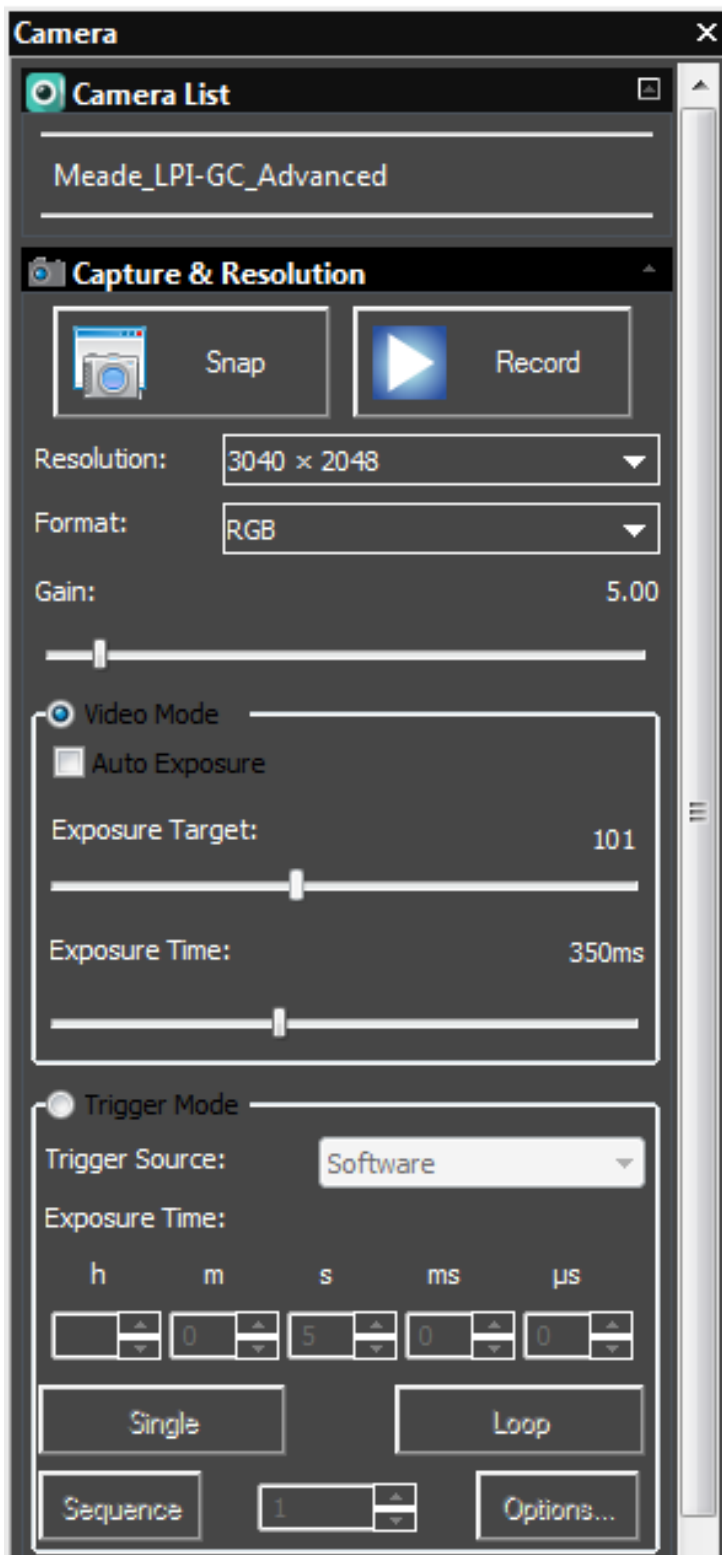
Basic Camera Operation

The following procedure will guide you through capturing your first image with the LPI-G Series camera. For detailed instructions on using the numerous SkyCapture features, go to the Help menu for more details.

1. Plug the camera into your computer's USB port. If this is the first time plugging the camera into your computer, wait for the camera drivers to install.
2. Open SkyCapture. On the left side of the screen, the **Camera** window displays the camera controls. By default, the **Camera List** and **Capture & Resolution** tabs will appear.
3. Confirm your Meade LPI-G series camera model is shown on the **Camera List**. For example "Meade LPI-GC Advanced".
4. Click the camera model shown in the **Camera List** to begin a live video stream.
5. Using your telescope, find and focus your target.. You can adjust the Gain and Exposure Time slider bars to get the brightness to the desired level. Alternatively, you can check the Auto Exposure box, however lunar and planetary often have best results when manually setting the exposure and gain.

Note: You can monitor the framerate and number of frames streamed at the bottom of the screen.

6. Click Snap to take an individual exposure. You can save individual exposures by going to File: Save





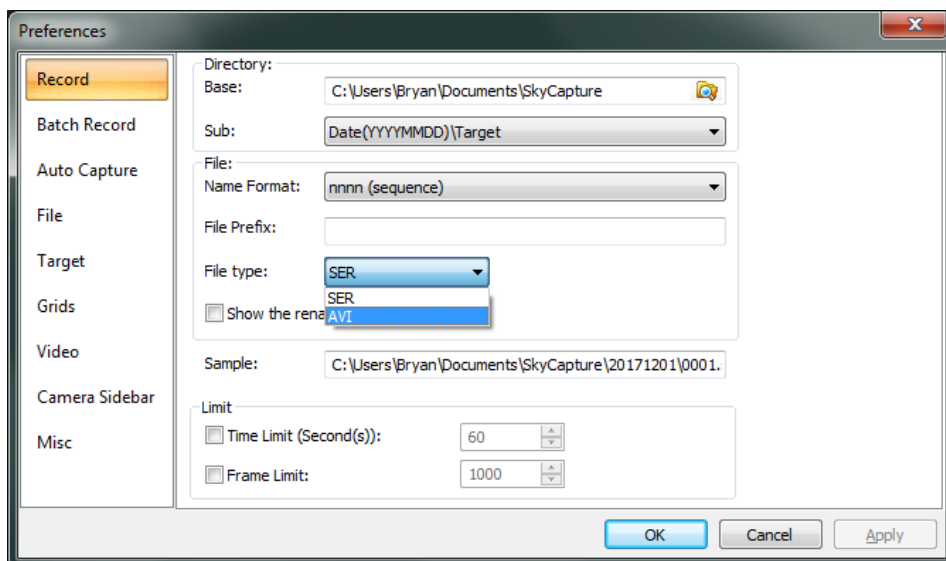
7. Click Record to start recording video. Note that recording video even for a few moments can quickly consume a lot of storage space on your computer. When recording video be sure you have ample space available.

For a Windows system, the default save location is:

C:\Users*(your user name)*\Documents\SkyCapture

You can change the save path by going to **Options: Preferences**, under the **Record** tab.

The default recording file format is SER. You can switch to AVI in the Preferences screen.



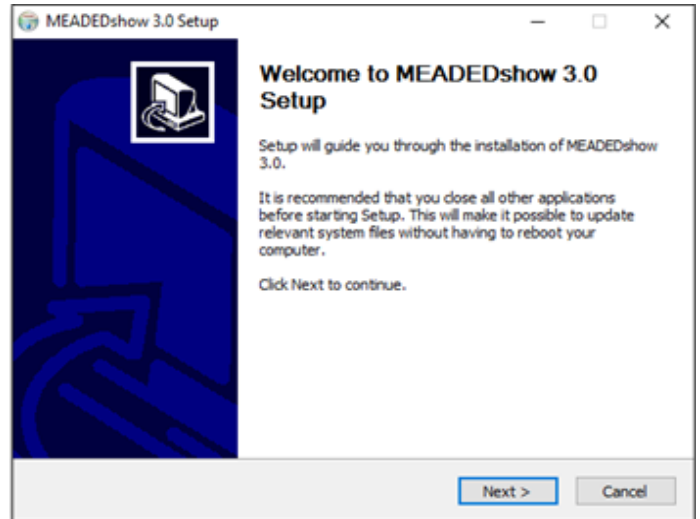
Capture Format

For Color cameras, we recommend using the default RGB mode found under **Format** in the **Capture & Resolution** tab. You can select RAW, but note that if you later export your raw SER or AVI file to a third party processing program, it will appear black and white unless your third party program is able to convert to color (debayer).

DirectShow Drivers

It's recommended you install the DirectShow drivers before using the Meade LPI-G camera. DirectShow drivers allow you to use 3rd party programs that use the DirectShow interface. Additionally, the DirectShow drivers allow the camera to image at a higher frame-rate than ASCOM drivers and is ideal for taking video. The DirectShow drivers also offers additional features such as auto-exposure. However, the RAW format is not supported by DirectShow.

To install the DirectShow drivers, click on "Camera DirectShow Driver" button found on the CD-ROM startup screen. Follow the on-screen instructions to complete the installation.

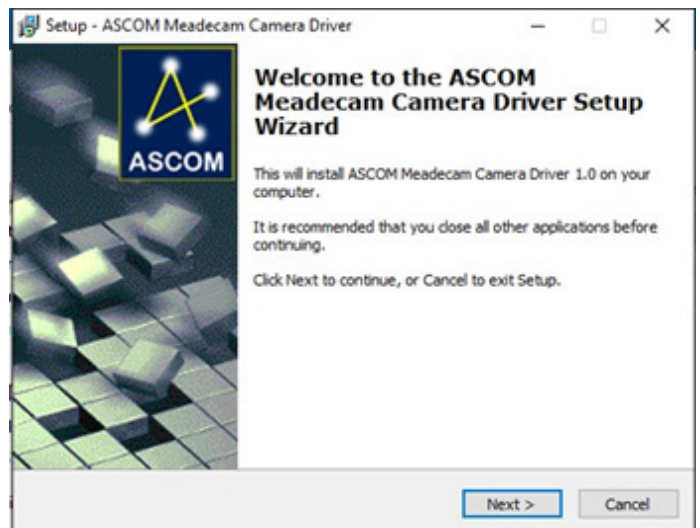
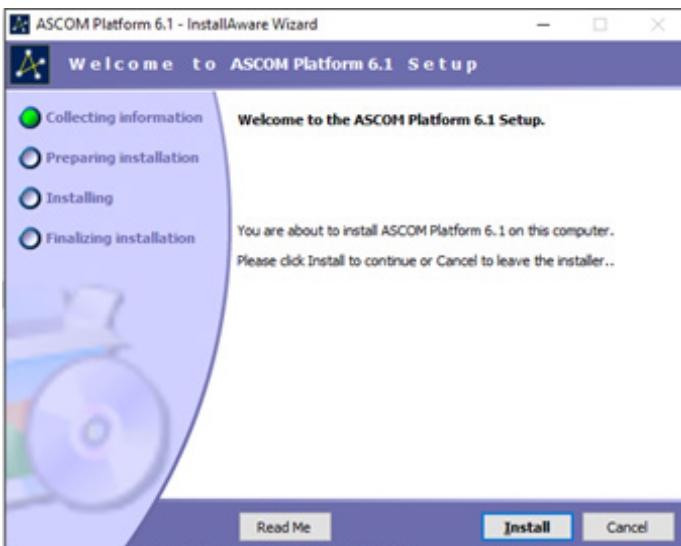


ASCOM Drivers

Many 3rd party software uses the ASCOM platform to interface with cameras and telescope equipment. If auto-guiding, imaging in RAW format, or wanting plug and play compatibility with 3rd party software, it's necessary to install the ASCOM & DirectShow drivers. Third party software such as Maxim DL, FireCapture, SharpCap, and PHD Guiding will also require the ASCOM and/or DirectShow drivers for LPI-G functionality.

To install the ASCOM drivers, first install the "ASCOM Platform" by clicking on the "ASCOM Platform" button found on the CD-ROM startup screen and follow the on-screen instructions.

After the ASCOM platform is installed, install the ASCOM Camera Drivers by clicking on the "ASCOM Camera Driver" button found on the CD-ROM startup screen. Follow the on-screen instructions to complete the installation



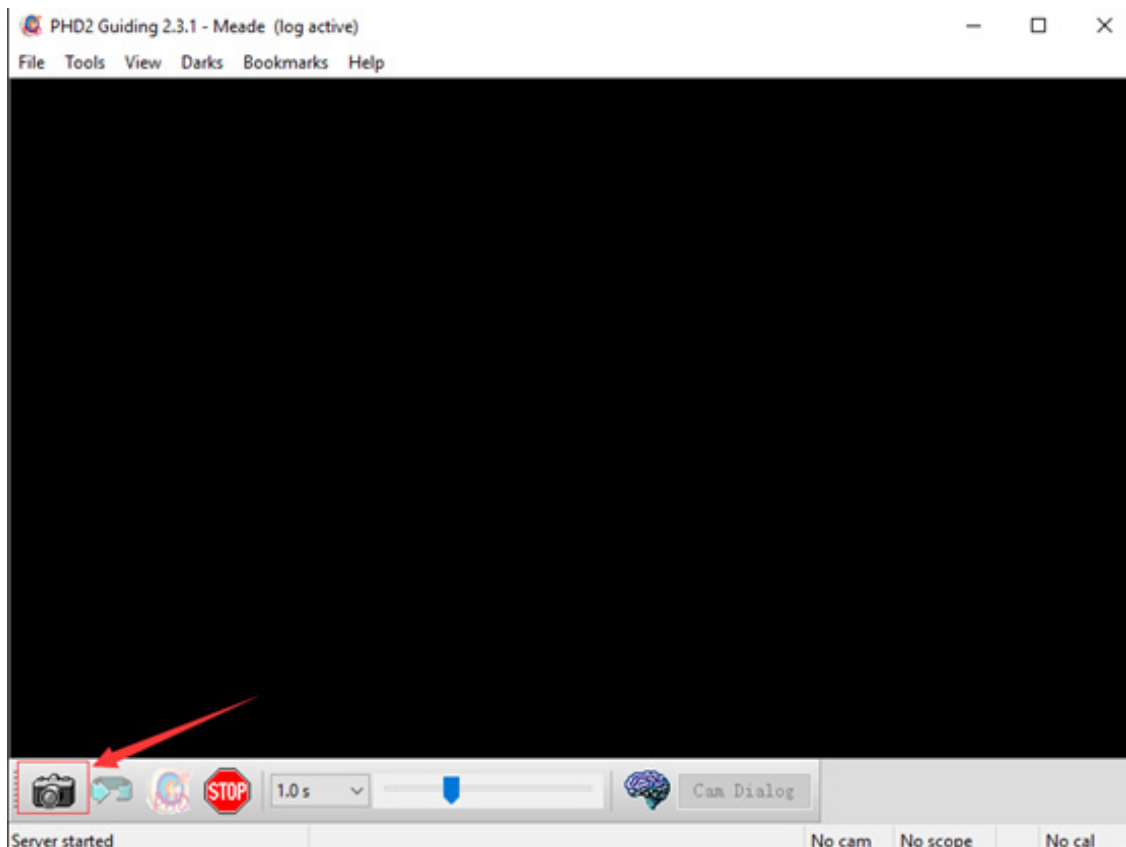
Autoguiding with the LPI-G Series Camera

The Meade SkyCapture software does not contain autoguiding software. To use the the LPI-G or LPI-G Advanced camera as an autoguiders, you must install the LPI-G ASCOM driver. The LPI-G series cameras work in a number of freeware autoguiding programs, such as PHD2 Guiding (available from openphdguiding.org).

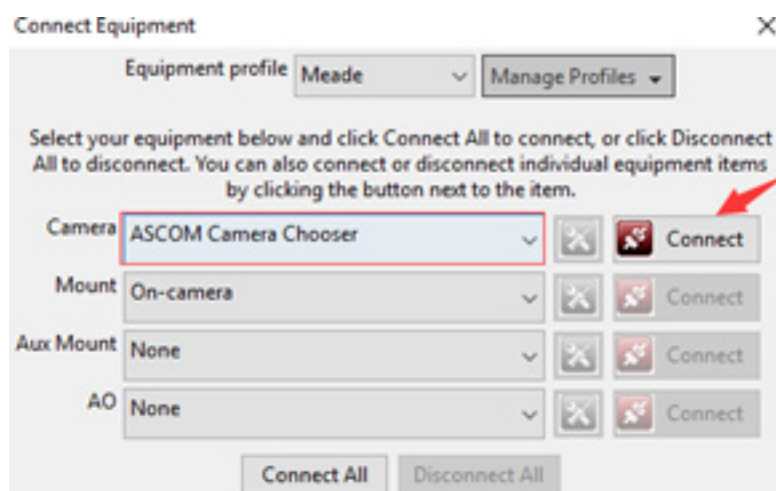
Connect the included autoguide cable (ST-4 compatble) from the LPI-G to the to the autoguide port on your mount. **Note: Some mounts use similar 6-pin ports which are not intended for the autoguider. Please confirm that your mount is ST-4 compatble before using the LPI-G as an autoguider.**

Autoguiding with PHD2 Guiding using ASCOM

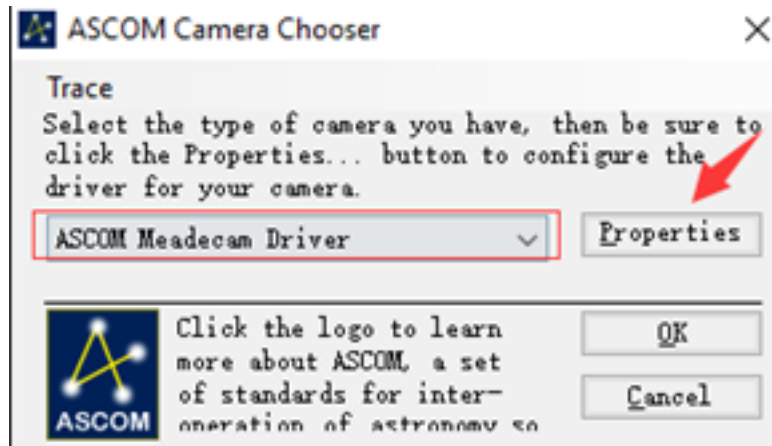
Run PHD Guiding software first and click the camera button on the left bottom of the application



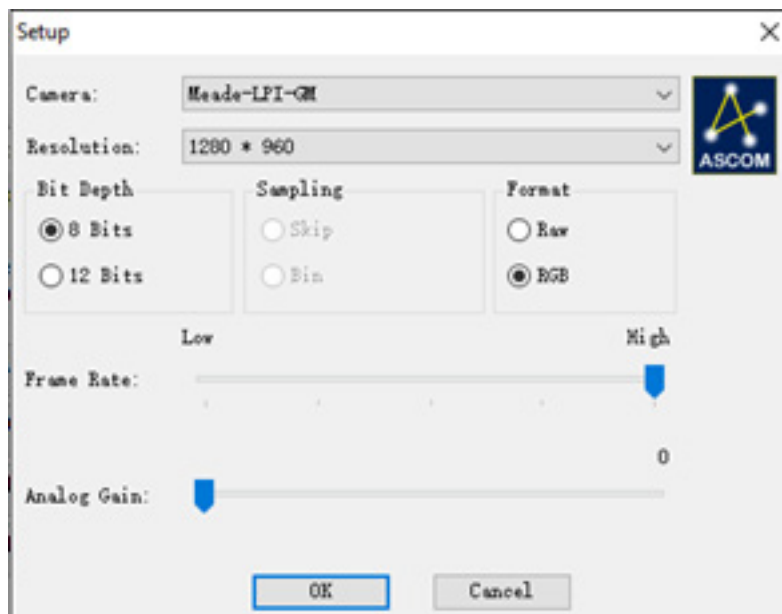
Select the “ASCOM Camera Chooser” in the Camera selection drop list box and then click the “Connect” button.



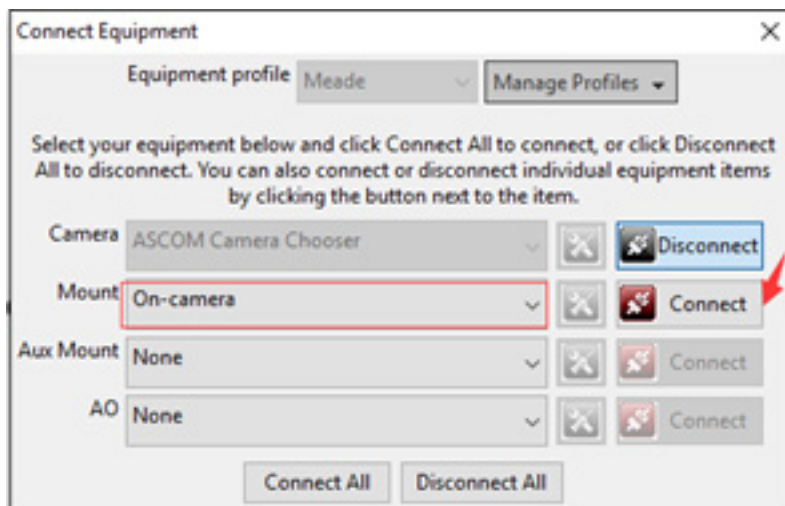
Select "ASCOM Meadecam Driver" in the drop list box and click "Properties".



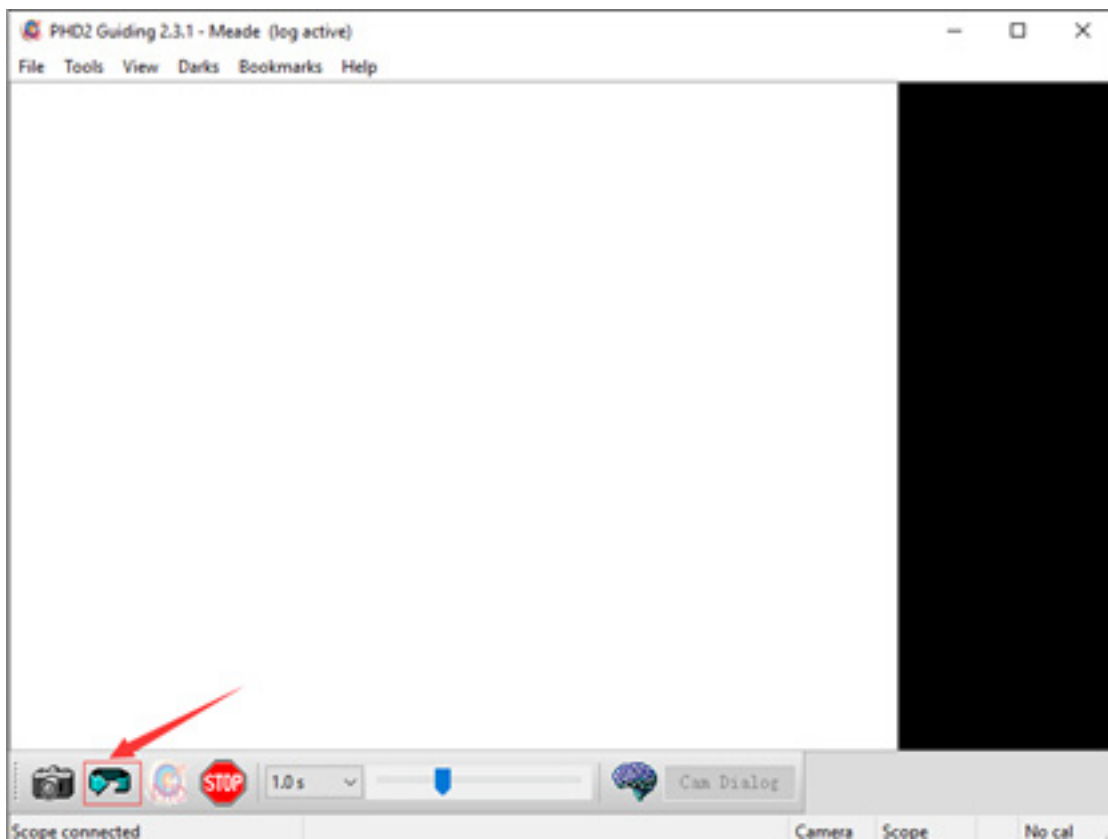
Change the setting in the following dialog and then click the "OK" button.



Select the "On-Camera" in the Mount drop list box and click "Connect".



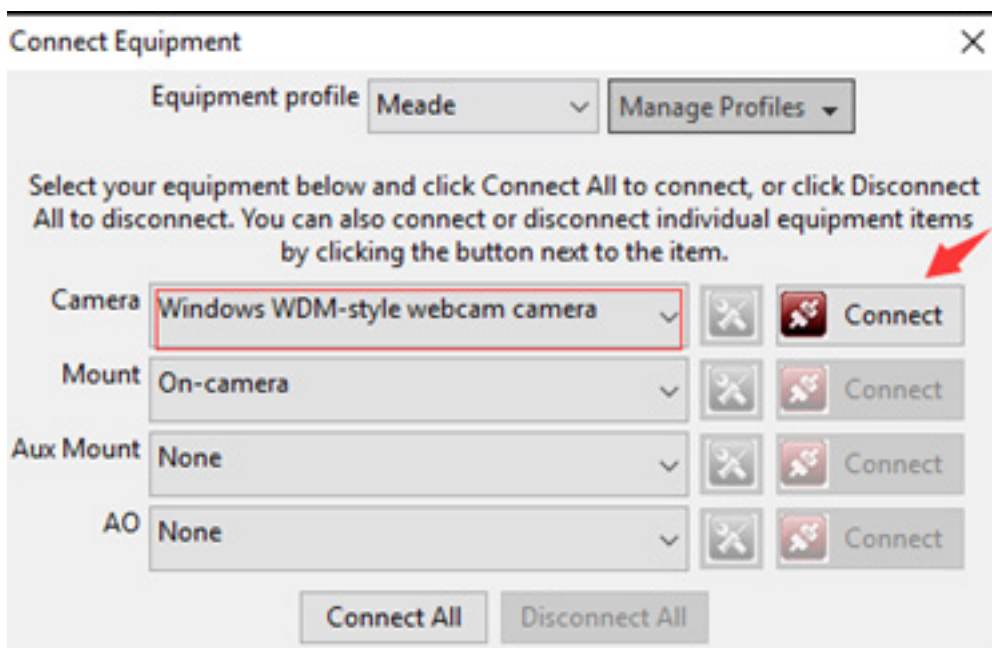
Close the Connect Equipment dialog to go back to PHD Guiding main interface. Then click the loop button to start the exposure



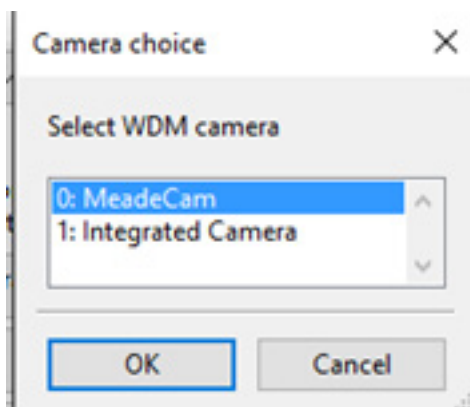
You can begin the autoguiding process at this step. Loop exposures, focus, click on the desired guide star, and proceed to calibrate and autoguide in PHD2.

Using the DirectShow Driver in PHD2 Guiding

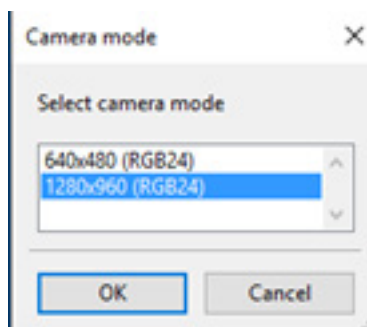
Select “Windows WDM-style webcam camera” in the camera selection drop list box and click “Connect” button.



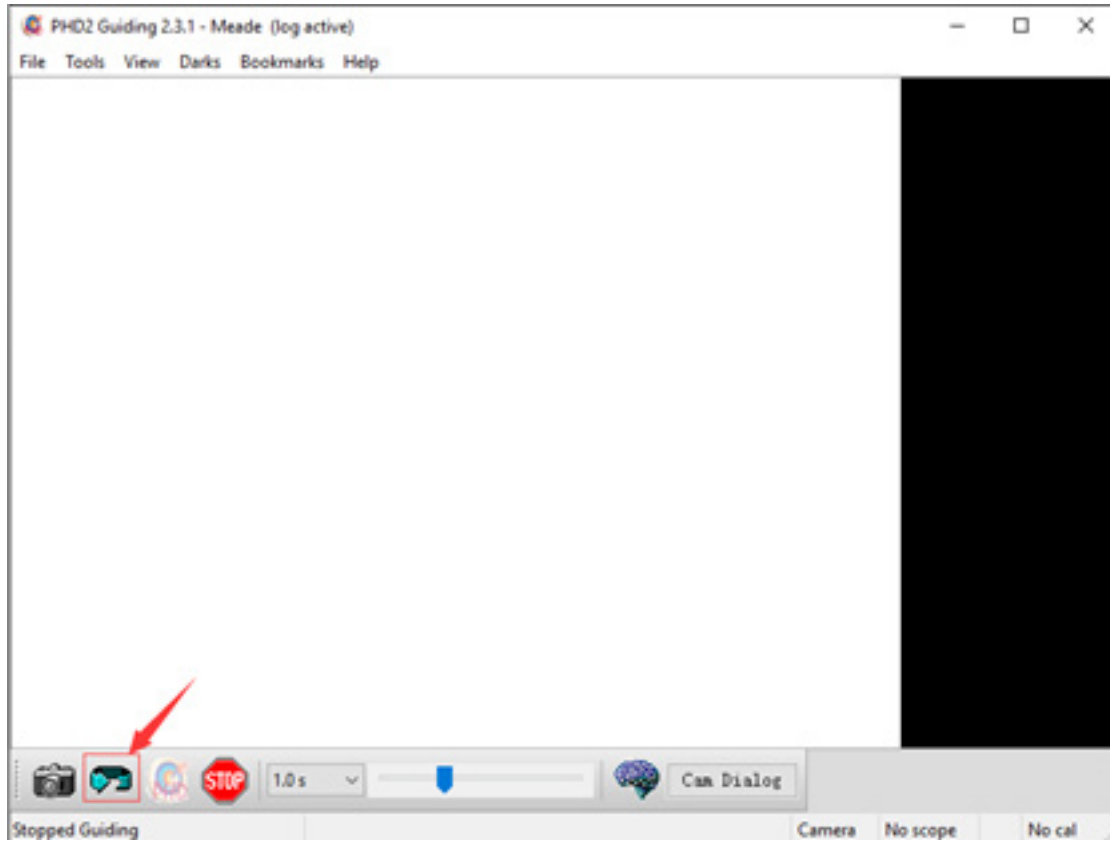
Choose “MeadeCam” in the pop up Camera choice box.



Choose the resolution in the Camera mode box.

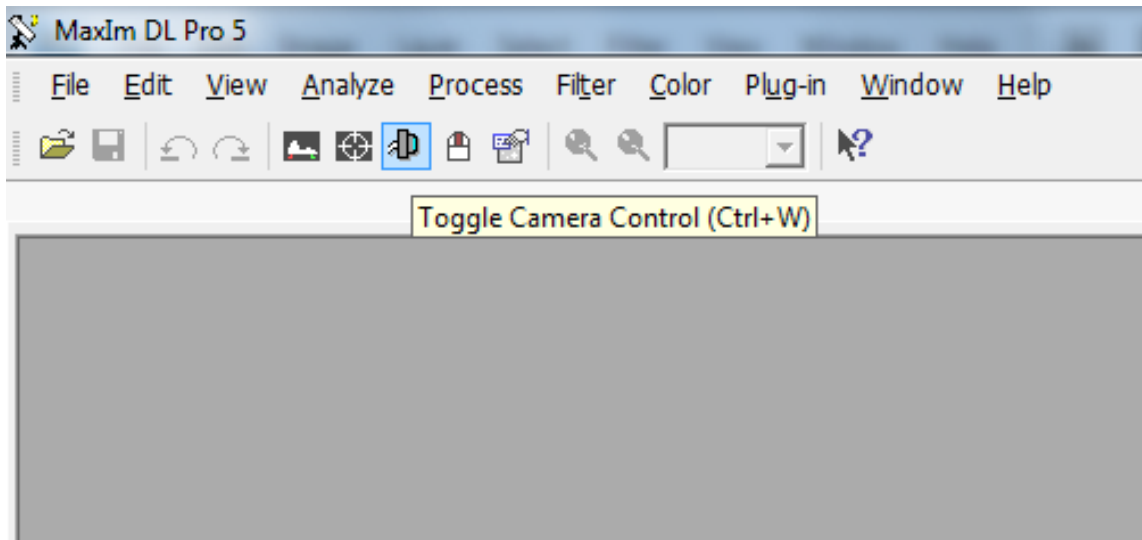


Go back to the main interface and click the loop button to start the exposure as the following.

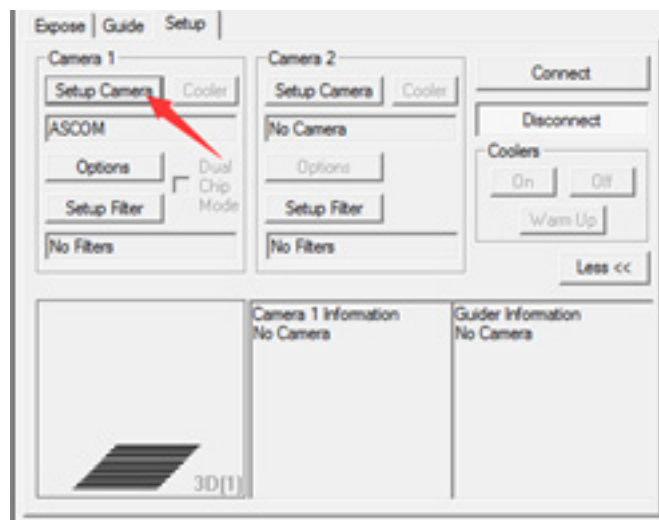


Using the ASCOM Driver in MaxIm DL

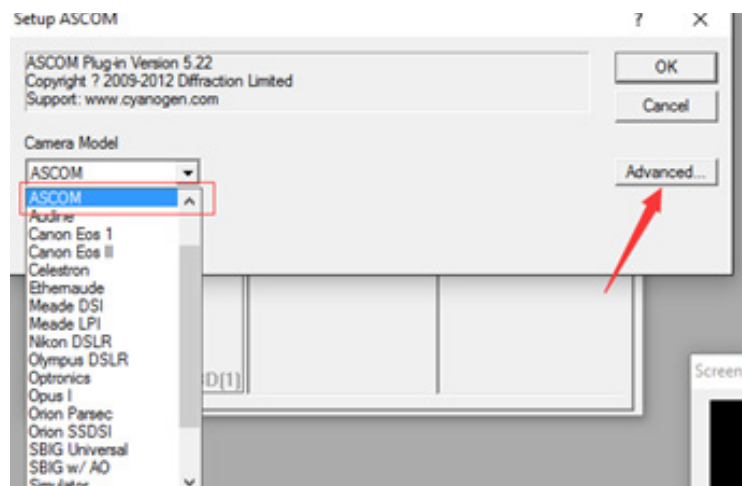
With the LPI-G Series camera connected to your computer's USB port, open MaxIm DL and click the Camera Control Window Icon.



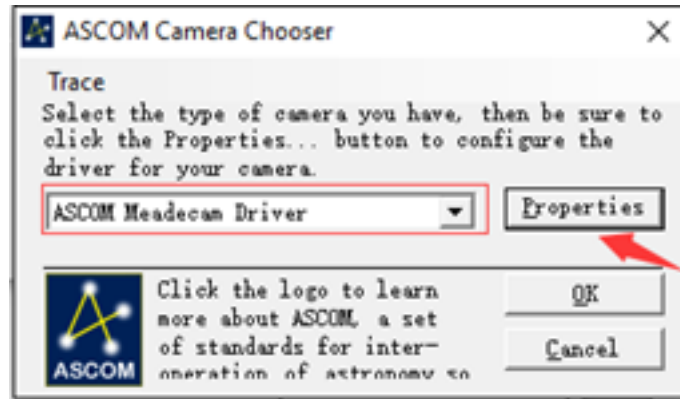
Click the "Setup Camera" button in the pop up Camera Control Window.



Select "ASCOM" and click the "Advanced...." button.



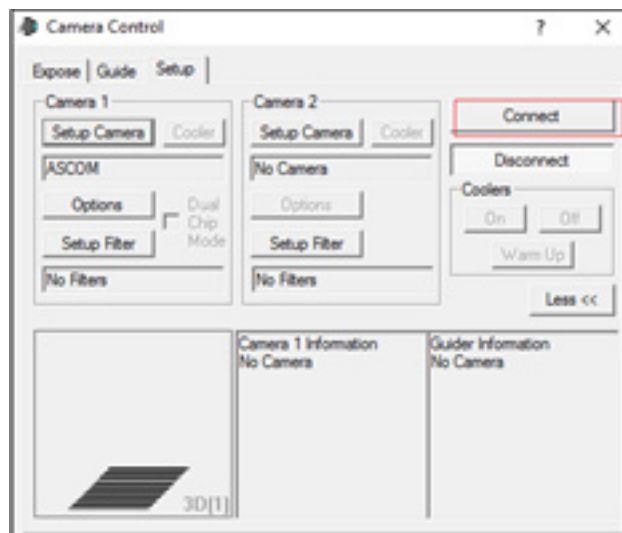
Select "ASCOM Meadecam Driver" in the drop list box and click the "Properties" button.



Adjust the camera settings as appropriate, or use the default settings, then click "OK"

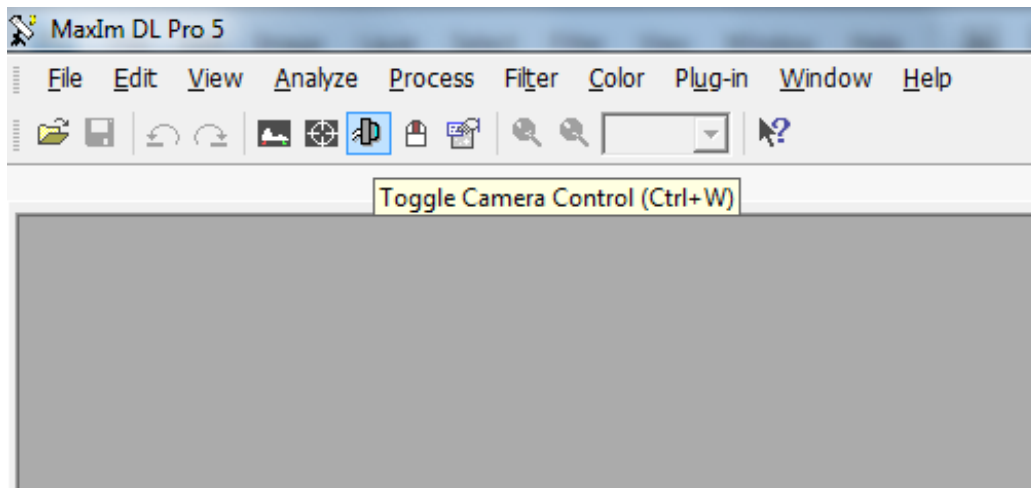


Click the "Connect" button to accomplish the connection.

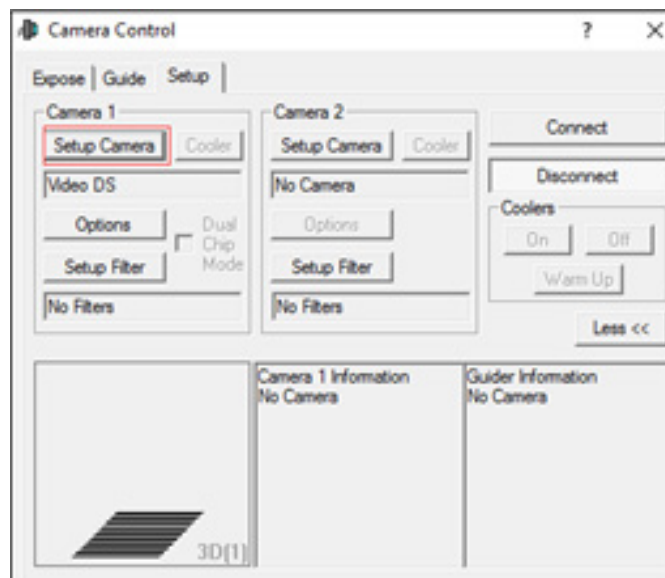


Using the DirectShow Driver in MaxIm DL

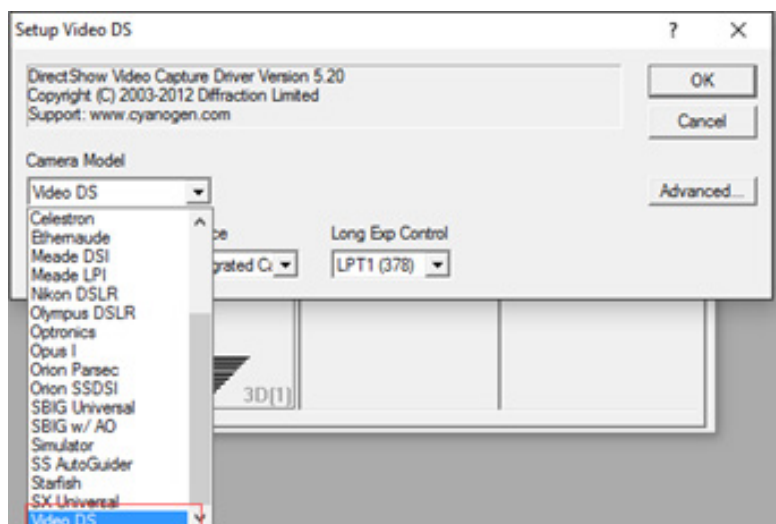
With the LPI-G camera connected to your computer's USB port, open MaxIm DL and click the Camera Control Window Icon.



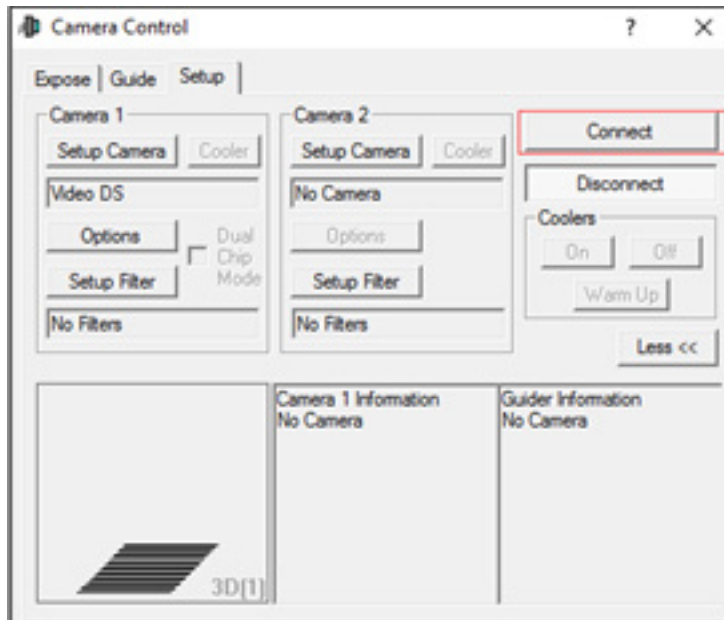
Click the “Setup Camera” button in the pop up Camera Control Window.



Select the “Video DS” in the pop up dialog and click “OK”.

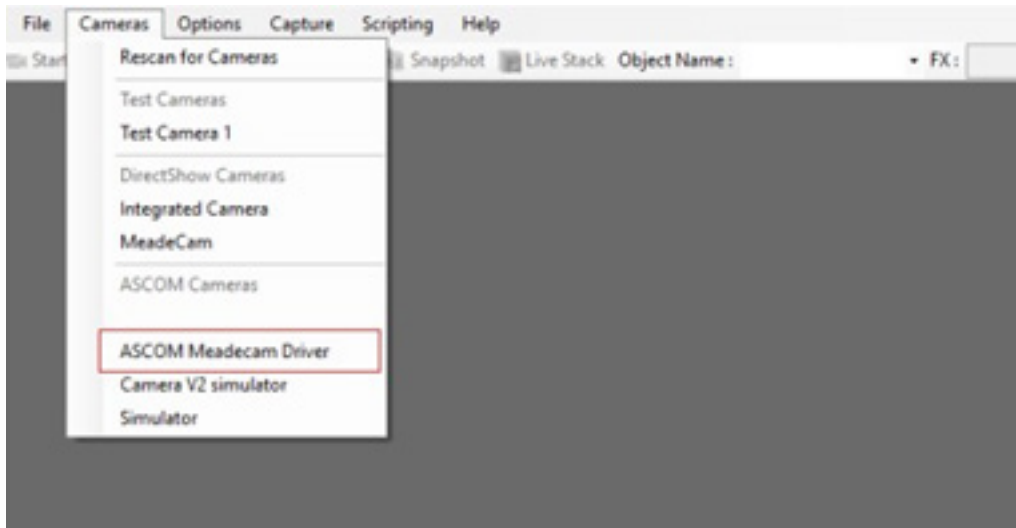


Click "Connect" to start the video.

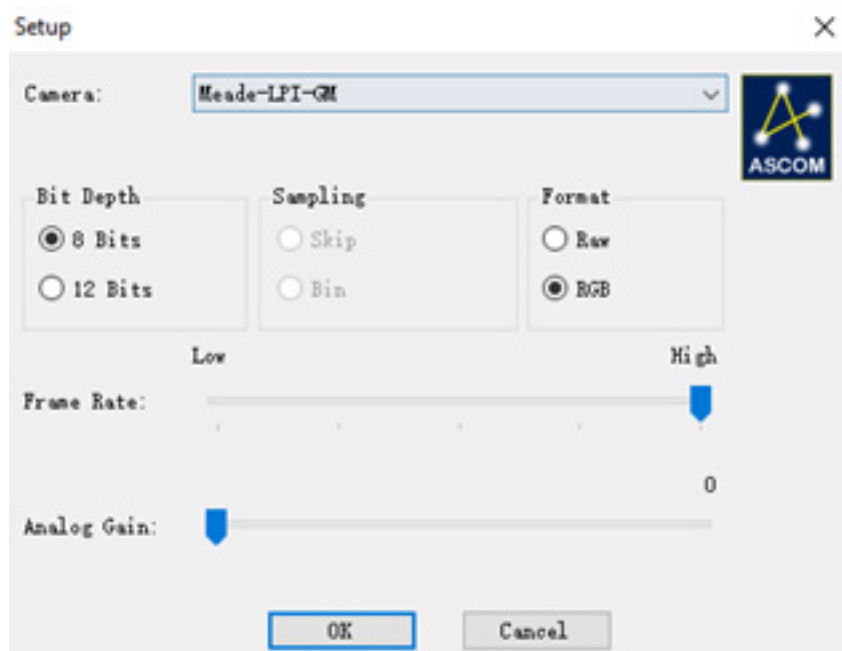


Using the ASCOM Driver in SharpCap

Select “ASCOM Meadecam” item in the ASCOM cameras section of the Cameras menu.



Change settings (or not) and click “OK” to start the video.



Using the DirectShow Driver in SharpCap

Select “MeadeCam” item in the DirectShow cameras section of the Cameras menu to start the video.

